

HEATER AND DUCTING

GROUP TA
TITLE HEATER AND DUCTING

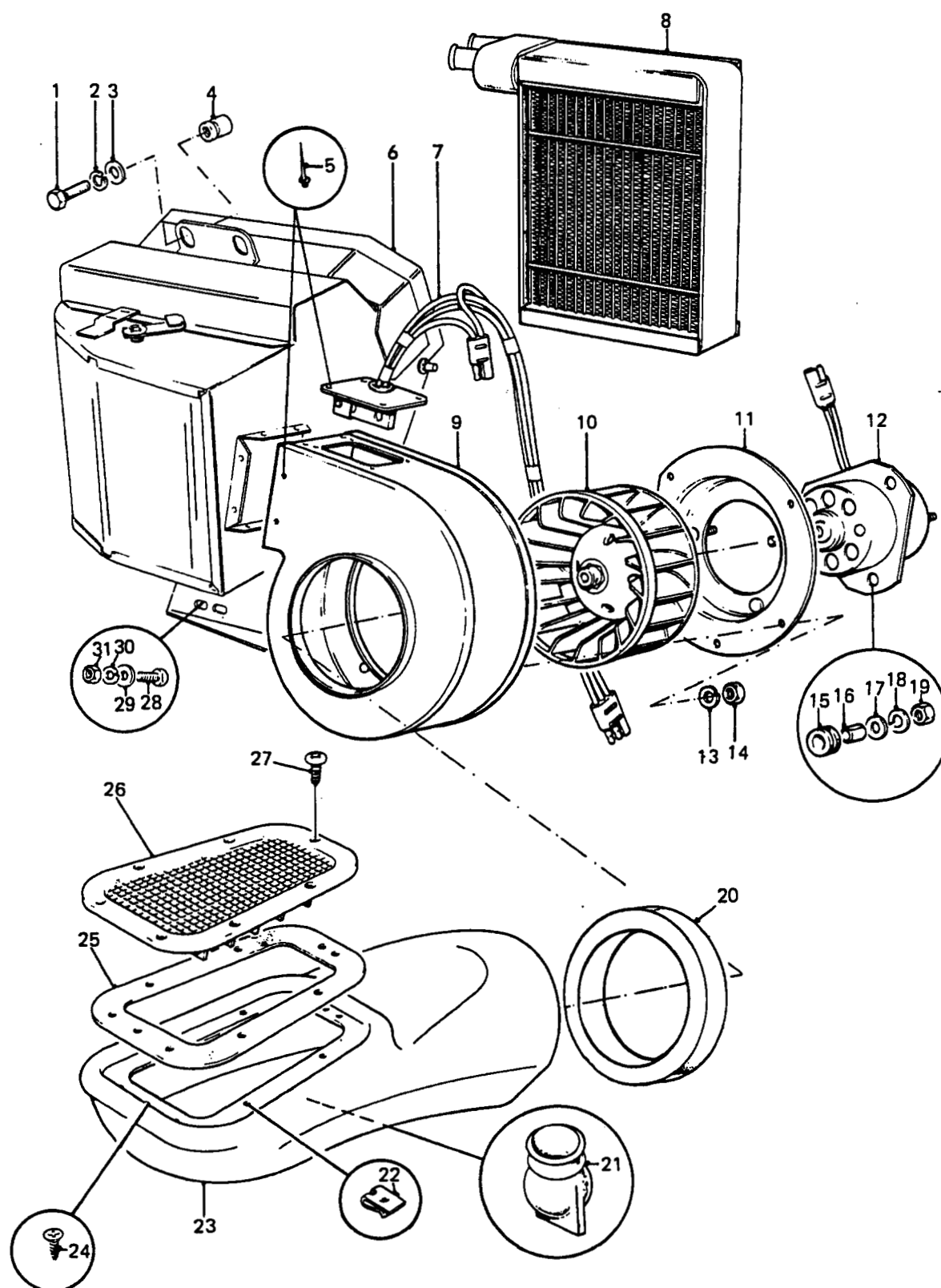
ITEM NO	DESIGNATION	NSN MANUFACTURER CODE/PART NO SUPPLIER CODE/PART NO	NO OFF	U O	E X	L* M* H*
001	SCREW, CAP, HEXAGON HEAD ISOMETRIC, 6G, STEEL, HEX HD, ZINC PLATED, 8 MM, 1.25 MM PITCH, 16 MM LG	5305 99-122-5365 U1030/SH108161 Z5394/SH108161	21	A	X	LMH
002	WASHER, LOCK SPRING, STEEL, SINGLE TURN, SQUARE SECTION, ZINC PLATED, 8 MM BOLT SIZE	5310 99-138-9227 U1030/WL108001L Z5394/WL108001L	21	A	X	LMH
003	WASHER, FLAT, ISO M, STEEL, RD, ZINC PLATED, 8 MM ID, 17 MM OD, 1.60 MM THK	5310 99-122-6475 U1030/WB108051 Z5394/WB108051	21	A	X	LMH
004	NUT, PLAIN, BLIND RIVET ISO M, STEEL, ZINC PLATED, 8 MM ID	5310 99-122-7705 U1030/NN108011 Z5394/NN108011	21	A	X	LMH
005	RIVET, BLIND ALUMINIUM ALLOY, DOME HD, MEM EX TYPE, 3/16 IN DIA, 7/16 IN LG (ALSO PART OF TA 006 AND TA 901)	5320 99-970-3518 U1030/78248 Z5394/R78248	121	A	X	LMH
006	HEATER, VEHICULAR, COMPARTMENT 12 VOLT, SUPPRESSED, RIGHT-HAND VEHICLE, C/W WITH 3 LEADS AND CONNECTOR (INCLUDES TA 005, TA 902 TO TA 008 AND TA 009 TO TA 019 LATER TYPE HEATER, WITH STRAIGHT WATER OUTLETS)	2540 99-738-0313 U1030/BTR1118 Z5394/BTR1118	11	A	A	LM
901	HEATER, ASSEMBLY, VEHICULAR EARLY TYPE, WITH BENT PIPES (INCLUDES TA 005, TA 902 TO TA 007, TA 903 TO TA 019)	U1030/RRC3525 U1030/BTR1112	1			
902	HEATER MOTOR ASSEMBLY, SUPPRESSED (INCLUDES TA 010 TO TA 012 AND TA 015 TO TA 019)	2540 99-737-8070 U1030/UTP1267 Z5394/UTP1267	121	A	A	LMH
007	WIRING HARNESS, VEHICLE HEATER, C/W RESISTOR (USE TA 006 OR TA 901)	/NIL /NIL	1			
008	RADIATOR, VEHICULAR COMPARTMENT HEATER SINGLE CORE, FLANGED CONNECTIONS (LATE TYPE CORE WITH STRAIGHT INLET/OUTLET PIPES, ALSO PART OF TA 006)	2540 66-128-6238 U1030/UTP1725 Z5394/UTP1725	11	A	A	MH

ISSUE NO: 3

REPAIR PARTS SCALE: 02188

PAGE NO: 396

* GRADE OF REPAIR (LIGHT, MEDIUM OR HEAVY)



HEATER AND DUCTING

GROUP TA
TITLE HEATER AND DUCTING

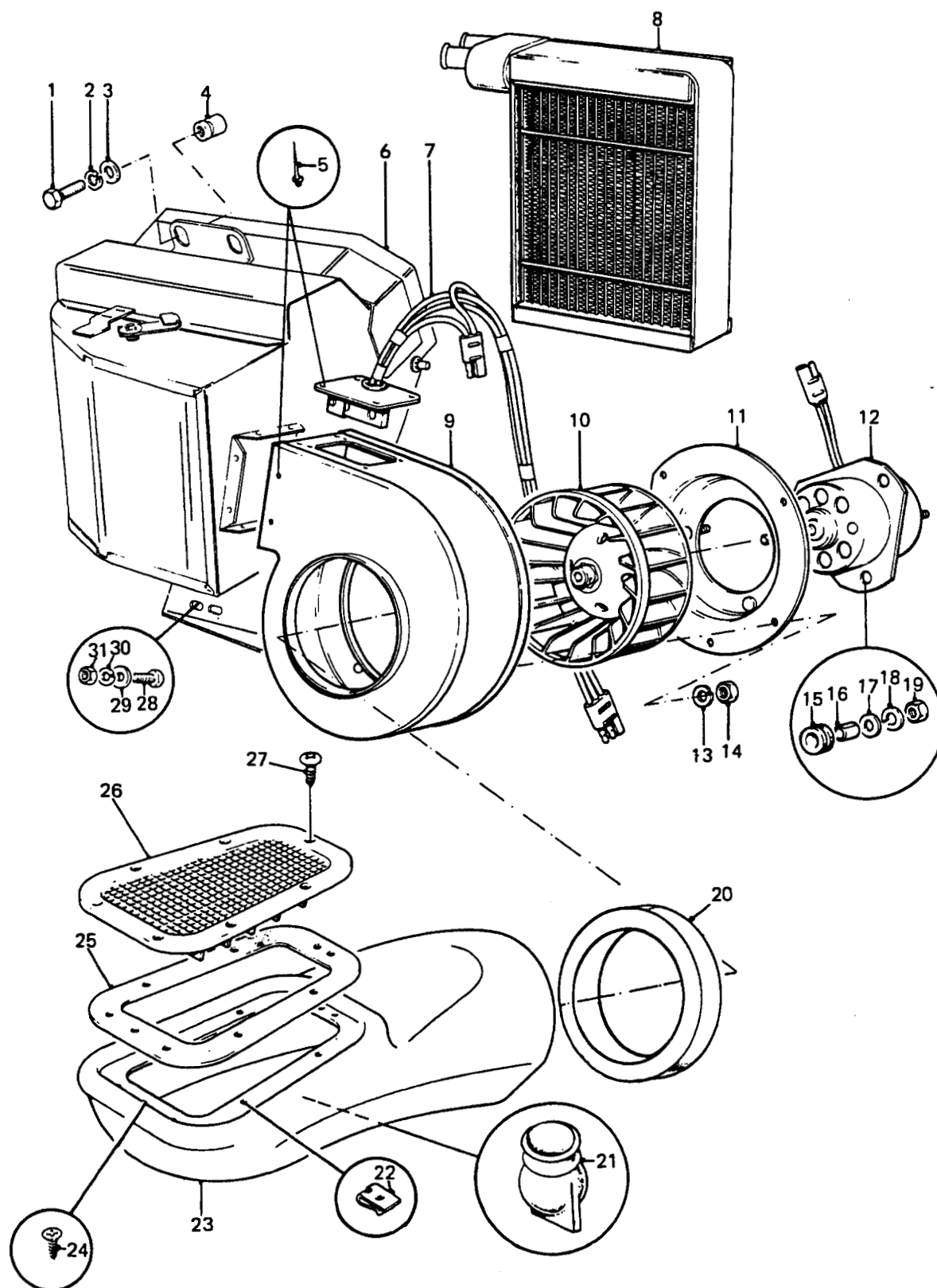
ITEM NO	DESIGNATION	NSN MANUFACTURER CODE/PART NO SUPPLIER CODE/PART NO	NO OFF	U O	R K	L* M* H*
903	RADIATOR, HEATER, VEHICULAR COMPARTMENT (EARLY TYPE, ALSO PART OF TA 901)	2540 99-721-4399 U1030/AAP817 Z5394/AAP817	1	EA	A	MH
009	VOLUTE ASSEMBLY, VEHICLE HEATER BLOWER (USE TA 006 OR TA 901)	/NIL /NIL	1			
010	IMPELLER, FAN, CENTRIFUGAL (USE TA 006 OR TA 901)	/NIL /NIL	1			
011	COVER, ROTOR (USE TA 006, TA 901 OR TA 902)	/NIL /NIL	1			
012	MOTOR ASSEMBLY (USE TA 006, TA 901 OR TA 902)	/NIL /NIL	1			
013	WASHER, SPRING (USE TA 902)	/NIL /NIL	5			
014	NUT, HEX (USE TA 902)	/NIL /NIL	5			
015	GROMMET, RUBBER, SOFT BLACK, 13 MM OD, 6 MM ID, 6 MM WIDE TO FIT HOLE SIZE 8.5 MM (ALSO PART OF TA 006, TA 901 AND TA 902)	Z5394/CZK6473 Z5394/CZK6473	3			
016	SPACER, STEEL, ANODISED, 6.5 MM OD, 5.0 MM ID, 5.5 MM LG, SPLIT (ALSO PART OF TA 006, TA 901 AND TA 902)	Z5394/CZK6486 Z5394/CZK6486	3			
017	WASHER, 5 MM ID, ZINC PLATED (ALSO PART OF TA 006, TA 901 AND TA 902)	Z5394/WA105001 Z5394/WA105001	3			
018	WASHER, LOCK, SINGLE COIL, RECTANGULAR SECTION, 5 MM ID, ZINC PLATED (ALSO PART OF TA 006, TA 901 AND TA 902)	Z5394/WL105001 Z5394/WL105001	3			

ISSUE NO: 3

REPAIR PARTS SCALE: 02188

PAGE NO: 397

* GRADE OF REPAIR (LIGHT, MEDIUM OR HEAVY)

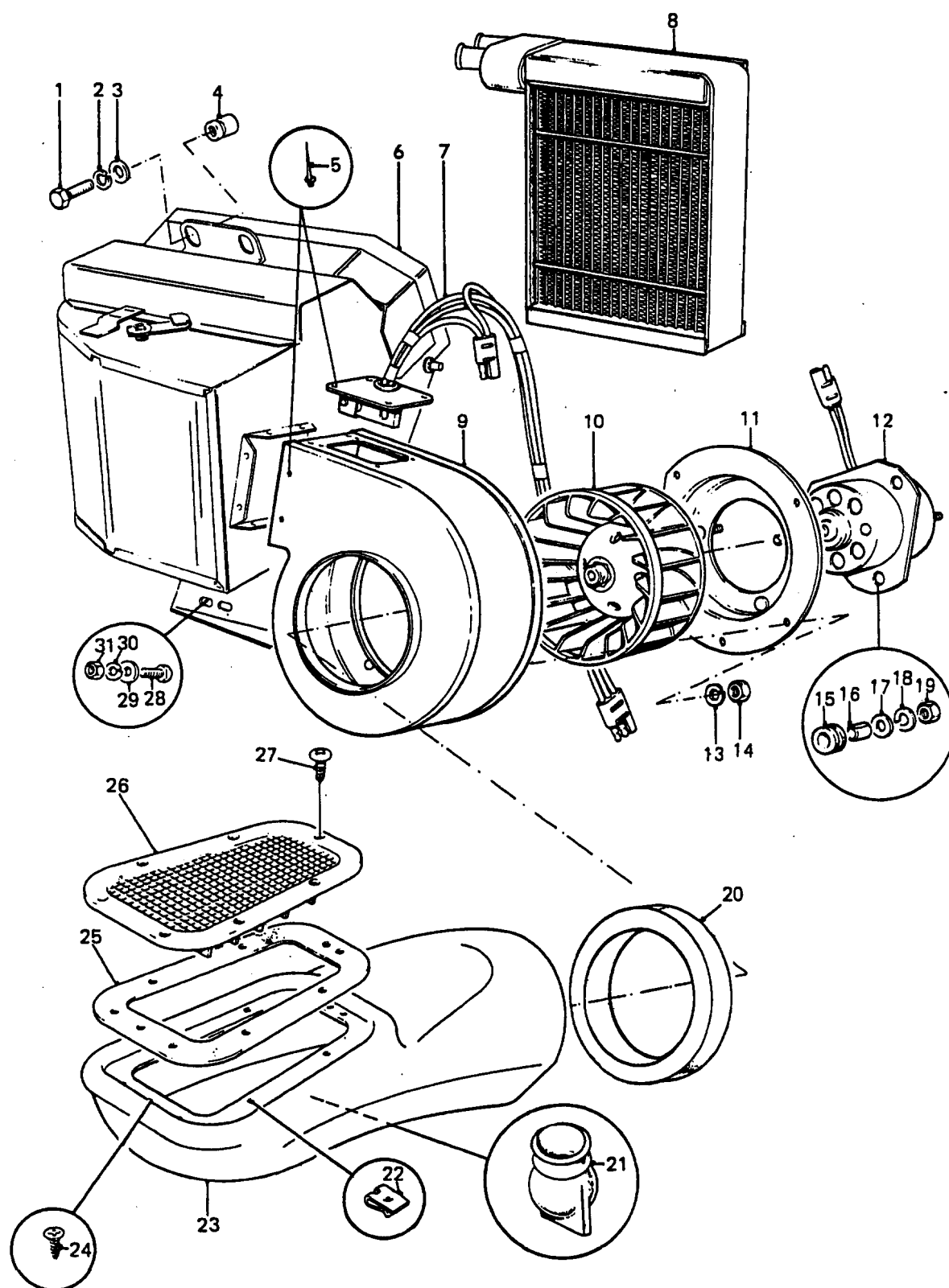


HEATER AND DUCTING

GROUP TA
TITLE HEATER AND DUCTING

ITEM NO	DESIGNATION	NSN MANUFACTURER CODE/PART NO SUPPLIER CODE/PART NO	NO OFF	U O	R X	L* M* H*
019	NUT, HEX, 5 MM ID, COARSE, STEEL, MEDIUM TENSILE, ZINC PLATED (ALSO PART OF TA 006, TA 901 AND TA 902)	Z5394/NH105041 Z5394/NH105041	3			
020	SEAL, AIR DUCT OPEN CELL POLYURETHANE, 111.0 MM ID, 1500 MM OD, 30.0 MM THK	2540 99-721-4413 U1030/MRC8378 Z5394/MRC8378	1EA	X		LMH
021	VALVE, DUMP CONICAL, 31.0 MM BASE O/DIA, 30.0 MM O/A LG, W/SLIT 19.0 MM LG	2940 99-729-2980 U1030/MUC2417 Z5394/MUC2417	1EA	X		LMH
022	NUT, SHEET SPRING STEEL, PHOSPHATED, NO.8 SHEET METAL SCREW SIZE	5310 99-137-6549 U1030/AJ608031 Z5394/AJ608031	9EA	X		LMH
023	PIPE, AIR CONDITIONING-HEATING PLASTIC, 450 MM LG, 180 MM W, 174 MM H, 1.5 MM NOM WALL THICKNESS	2540 99-720-8155 U1030/MUC2419 Z5394/MUC2419	1EA	X		LMH
024	SCREW, TAPPING, THREAD FORMING, REC PAN HD, NO.8 BY 1/2 IN LG	5305 99-977-3255 U1030/AB608044 Z5394/AB608044	4EA	X		LMH
025	GASKET DUCT TO TOP FRONT FENDER	5330 99-721-4414 U1030/MRC9998 Z5394/MRC9998	2EA	X		LMH
026	GRILLE, FINISHER PLASTIC, LEFT-HAND, AIR INTAKE	2540 99-950-3100 U1030/AWR2215 Z5394/AWR2215	1EA	X		LMH
904	GRILLE, FINISHER PLASTIC, RIGHT-HAND, AIR INTAKE	2540 99-865-4597 U1030/AWR2214 Z5394/AWR2214	1EA	X		LMH
905	SHIELD, EXPANSION LOCKNUT, SPECIAL, SQUARE, NYLON.	5310 99-137-6356 U1030/GHF1021 Z5394/GHF1021	9EA	X		LMH
027	SCREW, TAPPING, THD FORMING, STEEL, PAN HD, CROSS RECESS DRIVE, PHOSPHATED, NO.8 BY 3/4 IN LG	5305 66-128-4725 Z5394/AB608065 Z5394/AB608065	14EA	X		LMH
028	SCREW, CAP, HEX HD, ISO M, 6G, STEEL, ZINC PLATED, 6 MM PITCH, 16 MM LG	5305 99-122-5360 U1030/FS106161 Z5394/FS106161	2EA	X		LMH
ISSUE NO: 3 REPAIR PARTS SCALE: 02188 PAGE NO: 398						

* GRADE OF REPAIR (LIGHT, MEDIUM OR HEAVY)

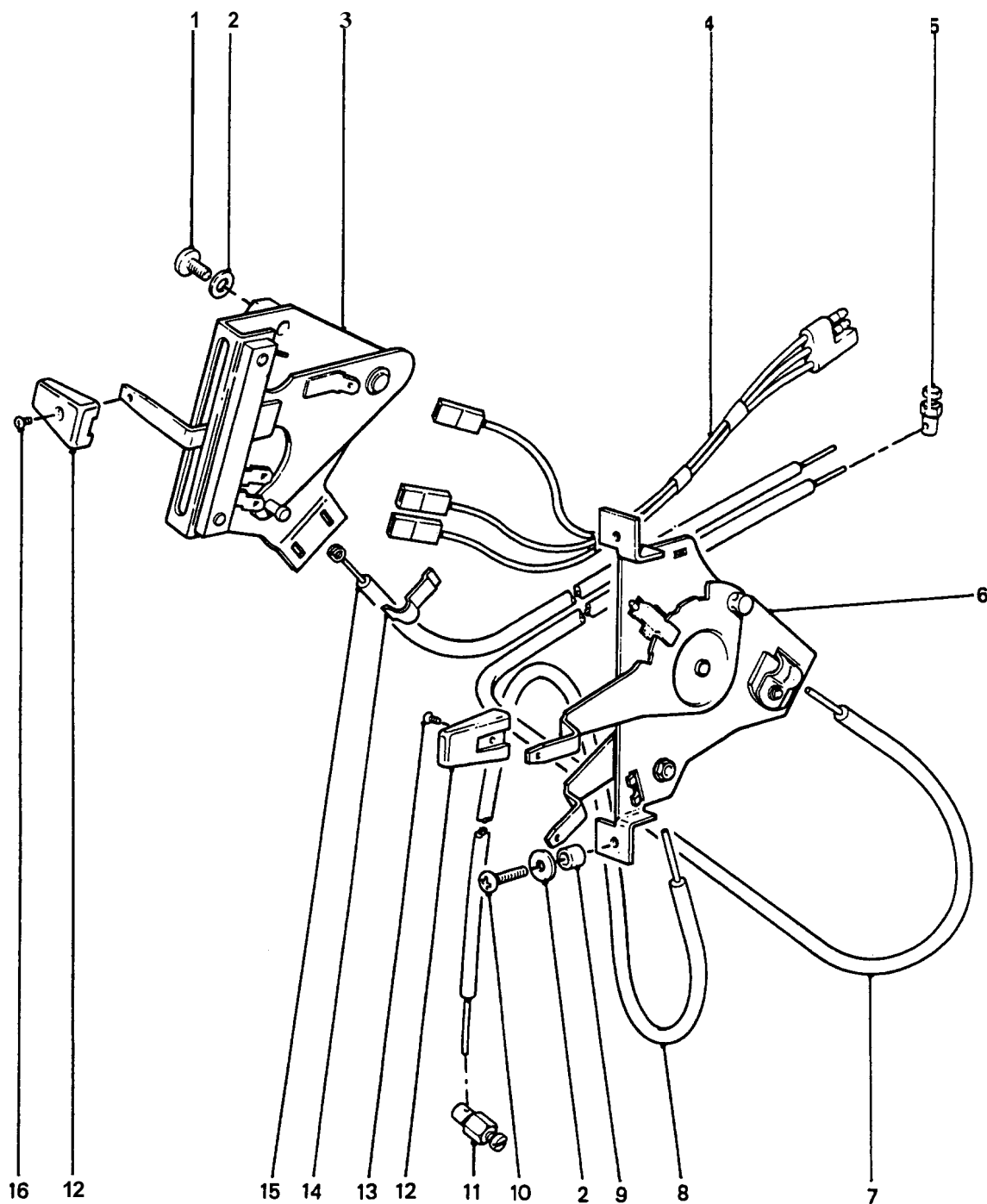


HEATER AND DUCTING

GROUP TA
TITLE HEATER AND DUCTING

ITEM NO	DESIGNATION	NSN MANUFACTURER CODE/PART NO SUPPLIER CODE/PART NO	NO OFF	U I	E X	L* M* H*
029	WASHER, FLAT RD, STEEL, ZINC PLATED, 6 MM NOM BOLT SIZE, 12.50 MM OD, 1.60 MM THK	5310 99-122-6474 25394/WA106001 25394/WA106001	2EA		X	LMH
030	WASHER, LOCK, SINGLE COIL, 6 MM ID	5310 99-208-6458 U1030/WL106001L Z5394/WL106001L	2EA		X	LMH
031	NUT, PLAIN, HEXAGON STEEL, 6 MM, ZINC PLATED	5310 99-122-5295 U0041/NU7-14Y1 Z5394/JLM9687	2EA		X	LMH
ISSUE NO: 3 REPAIR PARTS SCALE: 02188 PAGE NO: 399						

* GRADE OF REPAIR (LIGHT, MEDIUM OR HEAVY)

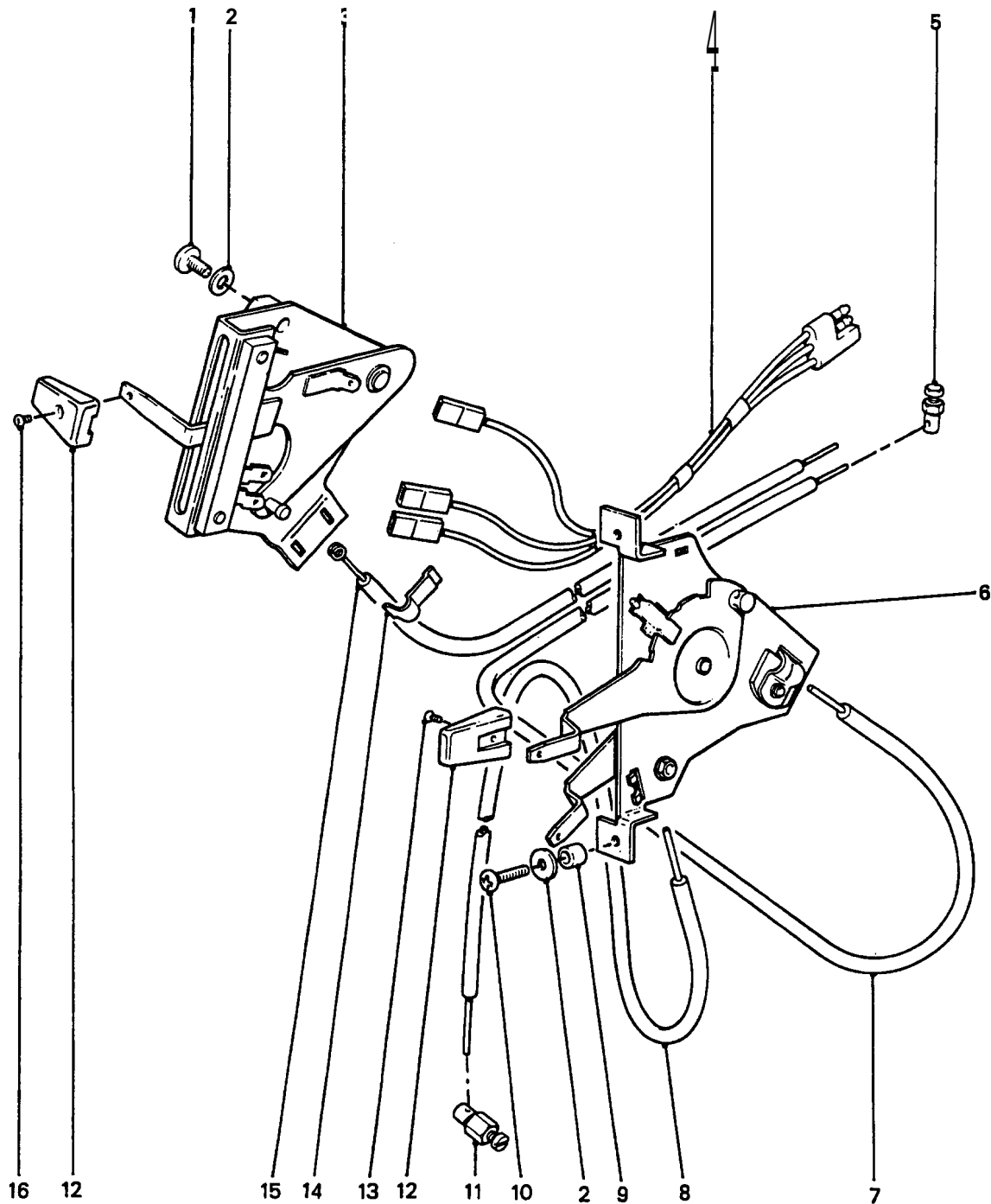


HEATER CONTROLS

GROUP **TAB**
TITLE **HEATER CONTROLS**

ITEM NO	DESIGNATION	NSN MANUFACTURER CODE/PART NO SUPPLIER CODE/PART NO	NO OFF	U O	E X	L* M* H*
001	SCREW, MACHINE METRIC, STEEL, PAN HD, 5 MM BY 16 MM LG	5305 99-135-0430 U1030/SE105161 Z5394/SE105161	2EA		X	LMH
002	WASHER, FLAT ROUND, STEEL, ZINC PLATED, 5 MM BOLT SIZE	5310 99-122-3032 U1030/WA105001 Z5394/WA105001	2EA		X	LMH
003	LEVER, MANUAL CONTROL HEATER OUTLET CONTROL ASSY W/OUT KNOB.	2540 99-720-8152 U1030/UTP1126 Z5394/UTP1126	1EA		X	LMH
004	WIRING HARNESS WIRING HARNESS, HEATER	2590 99-739-7166 U1030/AAP890 Z5394/AAP890	1EA		X	LMH
005	TRUNNION	2540 99-721-4411 U1030/RTC5978 Z5394/RTC5978	2EA		X	LMH
006	LEVER ASSEMBLY, HEAT MOUNTING PLATE, HEATER CONTROL	2540 99-829-0100 U1030/346924 Z5394/R346924	1EA		X	LMH
007	CABLE ASSEMBLY, CONTROL STEEL, 1.40 MM DIA, 1406.0 MM LG, PVC AND STEEL CASING	2540 99-721-4410 U1030/MTC6194 Z5394/MTC6194	1AY		X	LMH
008	CABLE ASSEMBLY CONTROL HEATER FLAP	2540 99-822-6471 U1030/347939 Z5394/R347939	1AY		X	LMH
009	SPACER, SLEEVE PLASTICS, BLACK, 4.5 MM ID, 8.0 MM OD, 9.0 MM THK	5365 99-721-4408 U1030/MRC9922 Z5394/MRC9922	2EA		X	LMH
010	SCREW, MACHINE C, STEEL, PAN HD, CROSS RECESS DRIVE, ZINC COATED, N0.8 BY 3/4 IN LG	5305 99-121-6815 U1030/SE808244 Z5394/SE808244	2EA		X	LMH
011	LOCKING PIN STEEL, CAD OR ZINC PLATED, NO 6 INT AND EXT THD	5315 99-137-6360 U1030/566902 Z5394/R566902	1EA		X	LMH
012	KNOB LEVER	5355 99-721-4404 U1030/MTC2805 Z5394/MTC2805	3EA		X	LMH
013	SCREW, MACHINE ISO METRIC, BRONZE, FLAT CSK HD, CROSS RECESS DRIVE, 3 MM BY 8 MM LG	5305 99-941-1937 U1030/MTC7737 Z5394/MTC7737	2EA		X	LMH
ISSUE NO: 3 REPAIR PARTS SCALE: 02188 PAGE NO: 400						

* GRADE OF REPAIR (LIGHT, MEDIUM OR HEAVY)

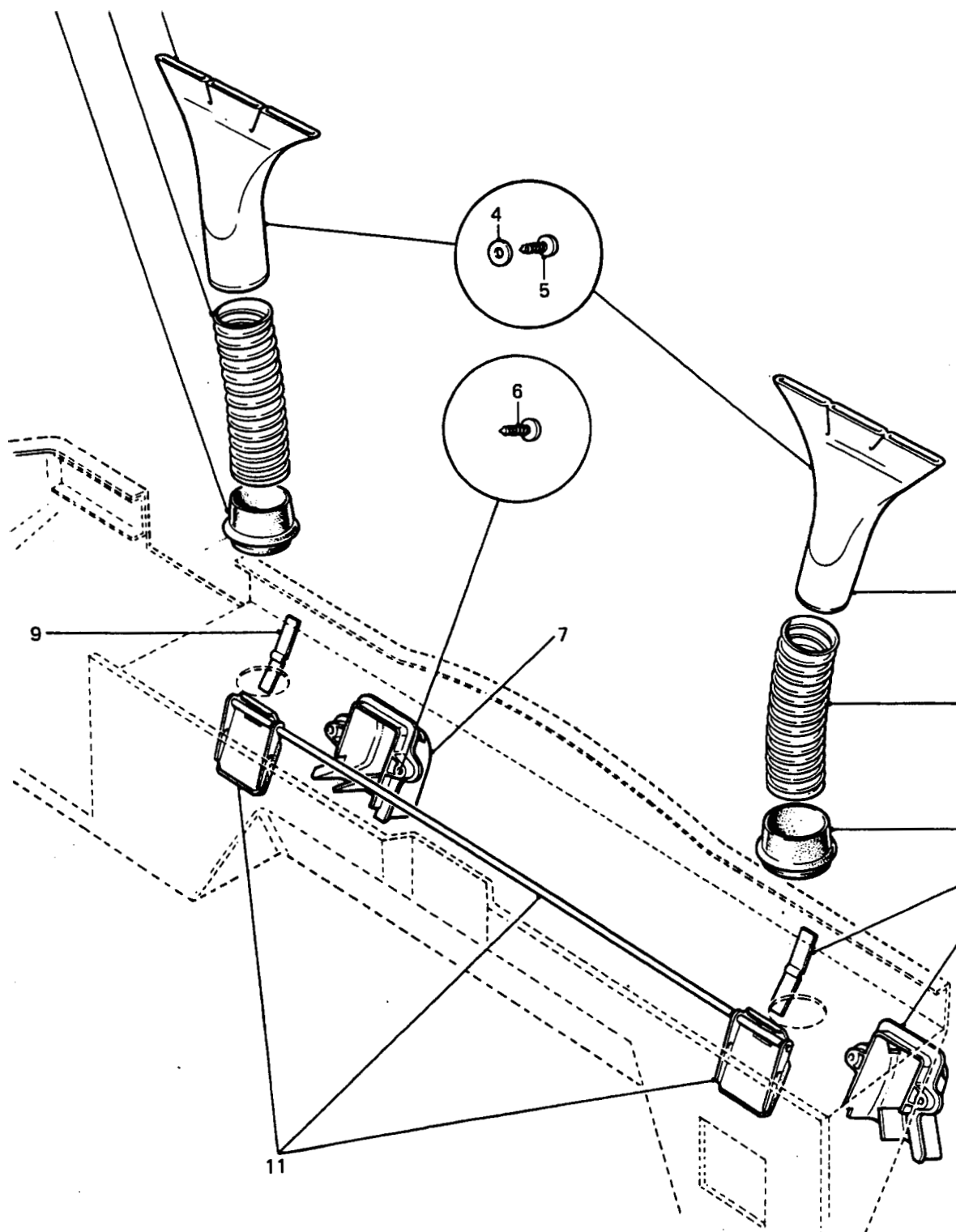


HEATER CONTROLS

GROUP TAB
TITLE HEATER CONTROLS

ITEM NO	DESIGNATION	NSN MANUFACTURER CODE/PART NO SUPPLIER CODE/PART NO	NO OFF	U O I	E X P	L* M* H*
014	CLAMP, LOOP STRAP, RETAINING, STEEL, 9.5 MM W, 24.4 MM LG, 0.6 MM THK MTL, GREEN	5340 99-838-7475 U1030/13H7343 Z5394/13H7343	2EA		X	LMH
015	CABLE ASSEMBLY, CONTROL HEATER	2540 99-721-4409 U1030/AAP876 Z5394/AAP876	1AY		X	LMH
901	CLAMP, LOOP (FITTED TO RH END OF CABLE)	5340 66-106-1527 Z5394/R622324 Z5394/R622324	1EA		X	LMH
902	STRAP, TIE DOWN (FITTED TO LH END OF CABLE)	5975 99-787-7254 U1030/AAU3686 Z5394/AAU3686	1EA		X	LMH
903	SCREW, TAPPING, THREAD FORMING STEEL, PANHD, CROSS RECESS DRIVE, ZINC COATED, NO.10 BY 3/4 IN LG	5305 99-120-5486 U1030/AB610061L Z5394/AB610061L	1EA		X	LMH
904	WASHER, FLAT STEEL, RD, 5.0 MM ID, 14.6 MM OD, 1.5 MM THK	5310 66-128-4726 Z5394/WJ105001 Z5394/WJ105001	1EA		X	LMH
016	SCREW, MACHINE O METRIC, BRONZE, RAISED CSK HD, CROSS RECESS DRIVE, 3 MM BY 8 MM LG	5305 99-122-5271 U1030/SG103084 Z5394/SG103084	1EA		X	LMH
ISSUE NO: 3 REPAIR PARTS SCALE: 02188 PAGE NO: 401						

* GRADE OF REPAIR (LIGHT, MEDIUM OR HEAVY)



DEMISTER AND HEATER OUTLETS

GROUP TAC
TITLE DEMISTER AND HEATER OUTLETS

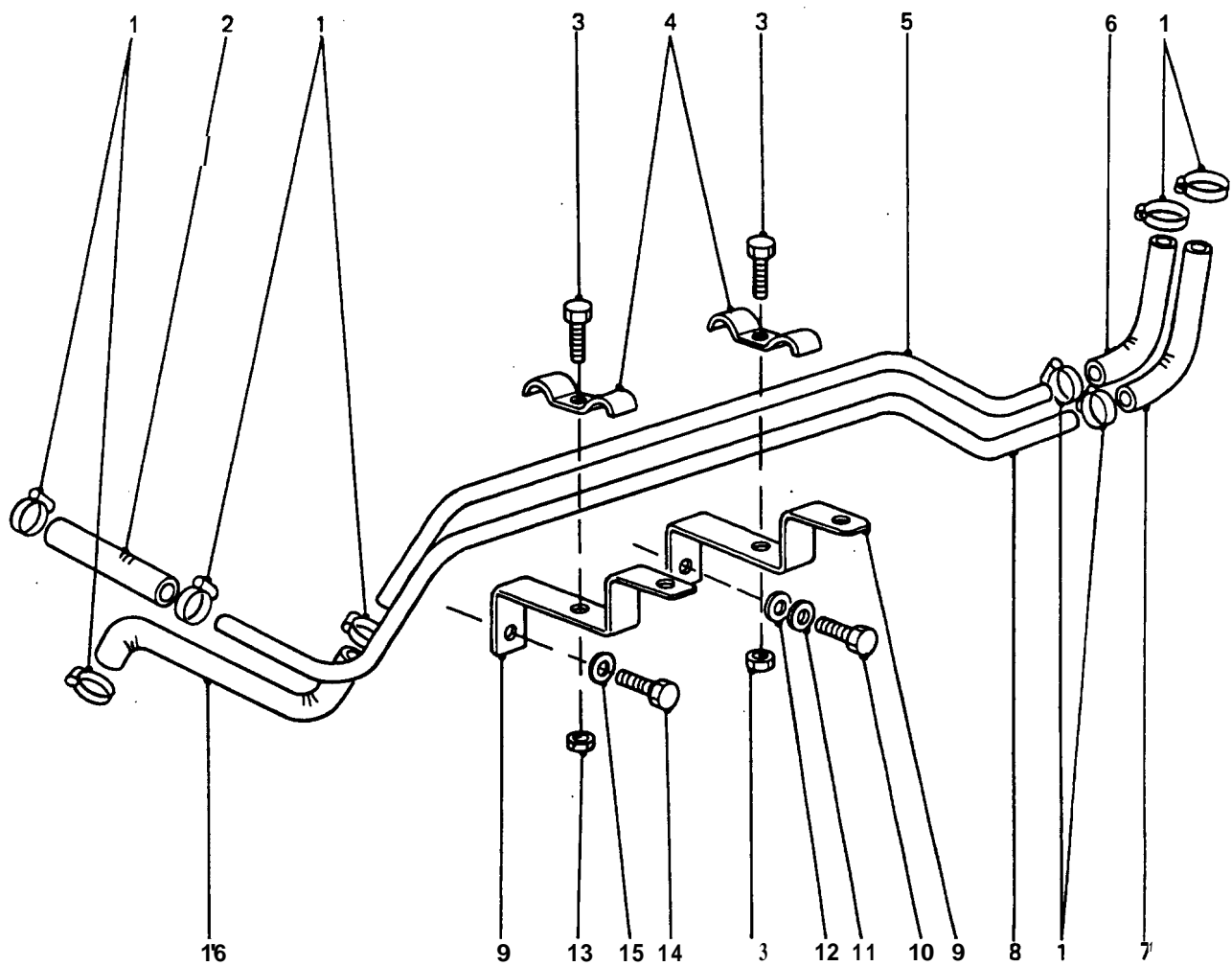
ITEM NO	DESIGNATION	NSN MANUFACTURER CODE/PART NO SUPPLIER CODE/PART NO	NO OFF	U O	E I	L* M* H*
001	GROMMET, NONMETALLIC	5325 99-721-4422 U1030/MRC7281 Z5394/MRC7281	2EA	X		LMH
002	HOSE, AIR DUCT SPIRAL INSERT, LENGTH 200 MM, OD 49 MM, ID 45 MM	2540 99-721-4421 U1030/MTC6382 Z5394/MTC6382	2EA	X		LMH
003	OUTLET, DEMISTER, RH, PLASTIC. (EARLY TYPE)	2540 66-128-4943 Z5394/MRC9668 Z5394/MRC9668	1EA	X		LMH
004	WASHER, FLAT ROUND, STEEL, ZINC PLATED, 5 MM BOLT SIZE	5310 99-122-3032 U1030/WA105001 Z5394/WA105001	2EA	X		LMH
005	SCREW, TAPPING, THREAD FORMING PAN HD, CROSS RECESS DRIVE, NO.8 BY 1/2 IN LG	5305 99-829-4335 Z5394/AB608041 Z5394/AB608041	2EA	X		LMH
006	SCREW, TAPPING THREAD FORMING, STEEL, BLACK OXIDE, PAN HD, CROSS RECESS DRIVE, NO.8 BY 5/8 IN LG	5305 66-128-4655 Z5394/AB608054L Z5394/AB608054L	4EA	X		LMH
007	DUCT, HEATER PLASTIC, 82.5 MM LG, 74 MM H, 39 MM W, RIGHT-HAND.	2540 99-825-4080 U1030/395829 Z5394/R395829	1EA	X		LMH
008	OUTLET, DEMISTER, LH, PLASTIC. (EARLY TYPE)	2540 66-128-4945 Z5394/MRC9669 Z5394/MRC9669	1EA	X		LMH
009	SPRING, FLAP, HEATER DUCT SPRING, FLAP, HEATER DUCT	5360 99-824-3471 U1030/346976 Z5394/R346976	2EA	X		LMH
010	DUCT, HEATER PLASTIC, 82.5 MM LG, 74 MM H, 39 MM W LEFT-HAND.	2540 99-825-4081 U1030/JKB100450 Z5394/R395830	1EA	X		LMH
011	SEAL ASSEMBLY, HEATER DUCT	2540 99-825-4082 U1030/346894 Z5394/R346894	1EA	X		LMH
901	DIFFUSER, AIR, VEHICULAR HEATING AND VENTILATING OUTLET, DEMISTER, RH, PLASTIC (LATER TYPE)	2540 99-215-4519 U7887/11609-011 Z5394/BTR1600	1EA	X		LMH
902	(LATER TYPE)	U1030/BTR1599 Z5394/BTR1599	1			LMH

ISSUE NO: 3

REPAIR PARTS SCALE: 02188

PAGE NO: 402

* GRADE OF REPAIR (LIGHT, MEDIUM OR HEAVY)



HEATER PIPES AND HOSES

GROUP TAD
TITLE HEATER PIPES AND HOSES

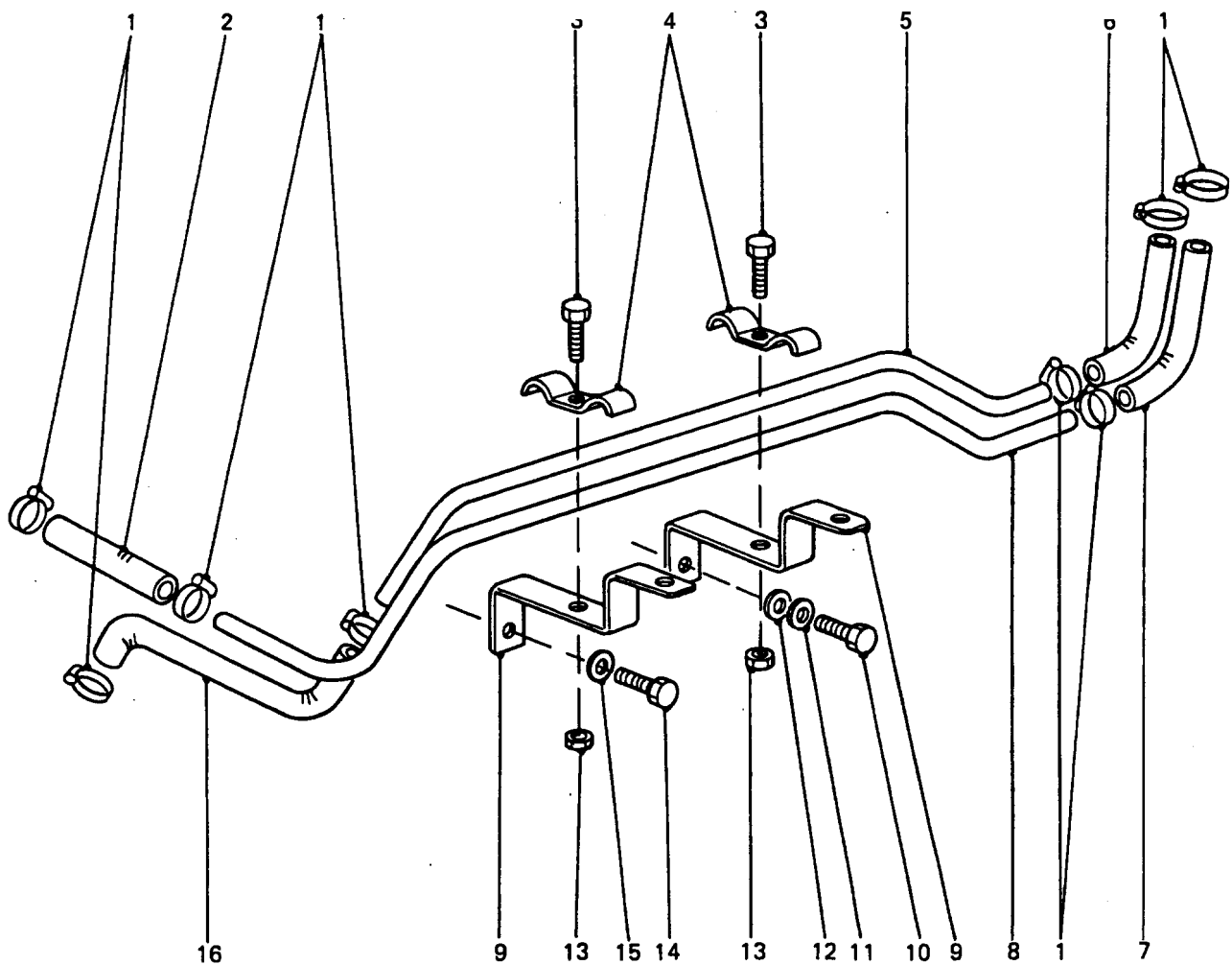
ITEM NO	DESIGNATION	NSN MANUFACTURER CODE/PART NO SUPPLIER CODE/PART NO	NO OFF	U O	E X	L* M* H*
001	CLAMP, HOSE STEEL, CAD PLATED, 20 MM TO 32 MM	4730 99-798-0799 U1030/CN100308 Z5394/CN100308	8EA		X	LMH
002	HOSE, PREFORMED SYNTHETIC RUBBER, 16 MM ID, 4.5 MM WALL THK, 115 MM LG	4720 66-128-4793 Z5394/AYG2689 Z5394/AYG2689	1EA		X	LMH
003	BOLT, MACHINE ISO M, STEEL, 6G THD CLASS, 6 MM THD DIA, 1 MM PITCH, 20 MM LG, ZINC PLATED	5306 99-663-5061 U1030/FS106201 Z5394/FS106201	2EA		X	LMH
004	STRAP, RETAINING STEEL, CAD PLATED	5340 66-128-4794 Z5394/MYH3152 Z5394/MYH3152	2EA		X	LMH
005	PIPE, BENT, METALLIC STEEL, ZINC COATED, 16 MM OD, 1.4 MM WALL THK	4710 66-128-4795 Z5394/AYG2959 Z5394/AYG2959	1EA		X	LMH
006	HOSE, PREFORMED, SYNTHETIC RUBBER, 16 MM ID, 4.5 MM WALL THK, 127.25 MM EFFECTIVE LG. (MANUFACTURE FROM TAD 901 OR TAD 902)	/NIL /NIL	1			
007	HOSE, PREFORMED, SYNTHETIC RUBBER, 16.0 MM ID, 4.5 MM WALL THK, 127.25 MM EFFECTIVE LG. (MANUFACTURE FROM TAD 901 OR TAD 902)	/NIL /NIL	1			
008	PIPE, BENT, METALLIC STEEL, ZINC COATED, 16 MM OD, 1.4 MM WALL THK	4710 66-128-4798 Z5394/AYG2876 Z5394/AYG2876	1EA		X	LMH
009	BRACKET, DOUBLE ANGLE	5340 66-128-5023 Z5394/AYG2686 Z5394/AYG2686	2EA		X	LMH
010	SCREW, HEX HD, METRIC, 6G, STEEL, ZINC PLATED, SHERADISED, M8 BY 20 MM LG	5305 66-139-2018 Z5394/FS108207 Z5394/FS108207	1EA		X	LMH
011	WASHER, LOCK SPRING, STEEL, SINGLE TURN, SQUARE SECTION, ZINC PLATED, 8 MM BOLT SIZE	5310 99-138-9227 U1030/WL108001L Z5394/WL108001L	1EA		X	LMH
012	WASHER, FLAT, ISO M, STEEL, RD, ZINC PLATED, 8 MM ID, 17 MM OD, 1.60 MM THK	5310 99-122-6475 U1030/JFW105/E Z5394/JFW105/E	1EA		X	LMH

ISSUE NO: 3

REPAIR PARTS SCALE: 02188

PAGE NO: 403

* GRADE OF REPAIR (LIGHT, MEDIUM OR HEAVY)



HEATER PIPES AND HOSES

GROUP TAD TITLE
HEATER PIPES AND HOSES

ISSUE NO: 3 REPAIR PARTS SCALE: 02188 PAGE NO: 404												
ITEM	NO	DESIGNATION	NSN	MANUFACTURER CODE/PART NO	SUPPLIER	CODE/PART NO	NO	U	E	L*	M*	H*
013	NUT, SELF-LOCKING, HEXAGON ISO METRIC, STEEL, ZINC, 6 MM THD, 10 MM A/F, 7.5 MM O/A H	5310 66-144-6236 U1030/NY106047L ZS394/NY106047L	2EA	X	L	M	H					
014	SCREW, HEXAGON HEAD M, STEEL, HEX HD, 8 MM-1.25 MM THD, 16 MM LG	5305 66-128-4426 S0226/8942008330 Z5394/8942008330	1EA	X	L	M	H					
015	WASHER, FLAT COPPER, RD, 8 MM BOLT SIZE, 13.8 MM OD, 1 MM THK	5310 66-128-4271 S0226/9095714080 Z5394/9095714080	1EA	X	L	M	H					
016	HOSE, PREFORMED SYNTHETIC RUBBER, 16 MM ID, 4.5 MM WALL THK	P170 66-128-4799 Z5394/AYG2867 Z5394/AYG2867	1EA	X	L	M	H					
901	HOSE, NONMETALLIC PERENTIE 6X6 FAMILY OF VEHICLES 16 MM ID BY 25 MM OD (USE ON EARLY TYPE HEATER, ALTERNATIVE ITEM TAD 903)	P170 66-143-5848 Z5394/MYH5341/1300 Z5394/MYH5341/1300	2EA	X	L	M	H					
902	HOSE, NONMETALLIC 16.0 MM ID, 26.0 MM OD, 1250.0 MM LG (USE ON LATE TYPE HEATERS, USE AS REQUIRED)	P170 66-128-6224 Z5394/AYG547 Z5394/AYG547	2EA	X	L	M	H					
903	HOSE, NONMETALLIC RUBBER, 16 MM ID BY 25 MM OD, BULK LENGTH (ALTERNATIVE TO TAD 901, USE AS REQUIRED)	P170 66-128-STSS Z0273/HH159-20 Z0273/HH159-20	1RO	X	L	M	H					

